



TIMS - USB DEVICES

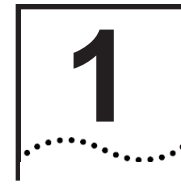
Getting Started Guide

<http://www.wireworkswest.com>

Published April 2005

CONTENTS

1	ABOUT TIMS USB DEVICES	1
2	USB SOFTWARE INSTALLATION	2
	Preparing for Installation	2
	Installing The Software	3
	Verifying Installation	6
3	LabVIEW DRIVER INSTALLATION	7
	Installing TIMS LabVIEW Drivers and Code	7
	APPENDIX	8
	Contact Information	8
	Warranty	8



ABOUT TIMS USB DEVICES

WireWorks West's USB based TIMS modules offer a wide variety of functionality including I2C and SPI communication, DMM, stepper motor control, digital IO and analog IO capabilities.

A complete LabVIEW driver library is provided for easy integration into higher level applications. A low-level Dynamic Link Library (DLL) is also provided for integration with other programming languages.

This Getting Started Guide will walk you through the USB driver installation and describe how to install the additional LabVIEW driver software on your system.

2

USB SOFTWARE INSTALLATION

Preparing for Installation

Before starting the installation process, you will need the following:

Hardware

- A PC with a USB 1.1 or 2.0 port
- A TIMS USB device
- A USB cable

Software

- TIMS Software Installation CD
- National Instruments LabVIEW 7.0 Software

Documentation

- TIMS Getting Started Guide (this document)
- Any additional device-specific manuals and documentation

2

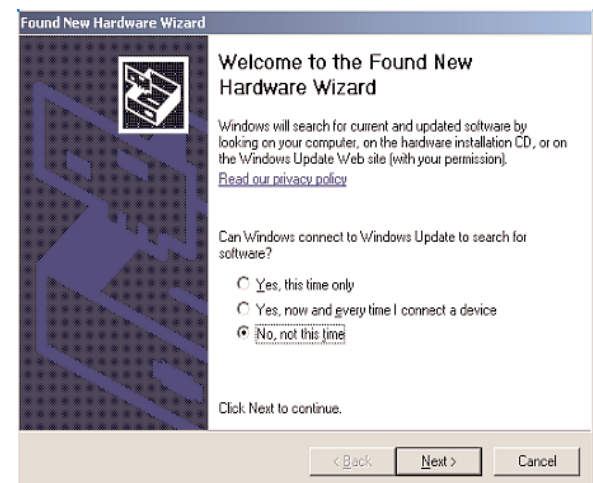
Installing the Software

All software for operating the TIMS Module comes on the "Software Drivers" CD that is shipped with the device.

Installing the USB Drivers

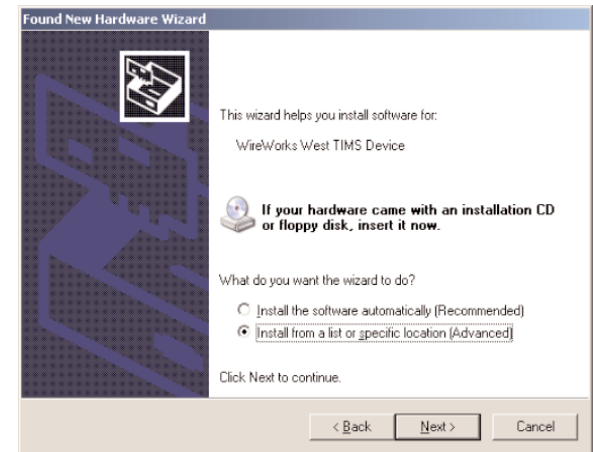
1. Place the Installation CD into the CD-ROM drive.
2. Connect the TIMS device to your computer.
3. Windows should detect the new device and pop up the following wizard:
(The dialog shown below is from Windows XP Service Pack 2; Windows XP, XP SP1 and Windows 2000 will have similar dialogs)

The following screen may or may not appear when the wizard first launches. If it does, select the option "No, not this time" to have Windows Update not search for the device.

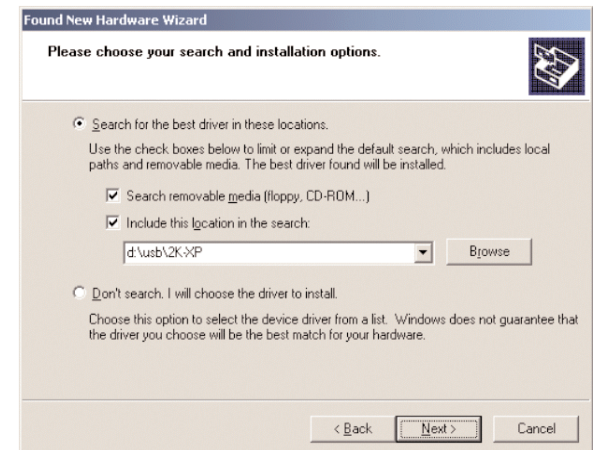


2

5. Next, choose "Install from a list or specific location (Advanced)."



Windows will bring up a search box like the one below. If you are installing from CD, select "Search removable media". If you have copied the WireWorks West TIMS files to another location, specify that location in the include path. Ultimately, you want to specify the folder in which the file **WiWoD2XX.inf** is located. (This file is located in the "usb\2K-XP" folder on the driver installation CD).

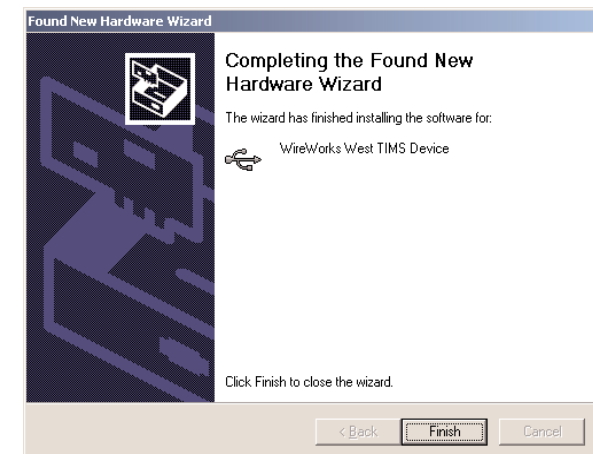


2

7. If you see the following dialog, select "Continue Anyway".



8. After Windows finishes installing your driver the following screen appears. Choose "Finish" to complete the installation process.

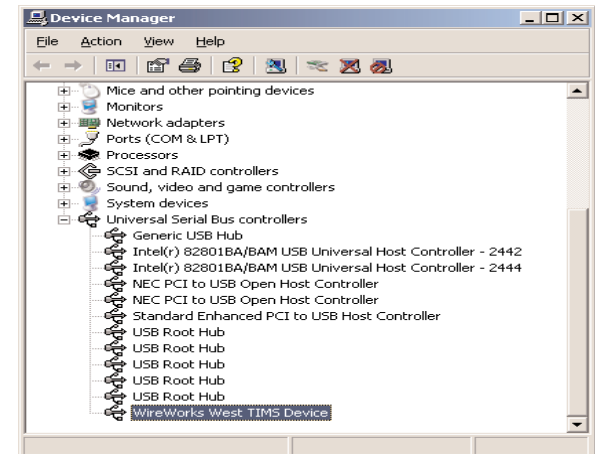


2

**Verifying
Installation**

From the Windows desktop, right click on "My Computer" and select "Properties". From the Hardware tab press the Device Manager button to open the device manager. Expand the Universal serial Bus controller item. You should see an entry for the TIMS device.

NOTE: There will be no entry in this list if the device is not connected to the PC.



3

LabVIEW DRIVER INSTALLATION

Installing TIMS LabVIEW Drivers and Code

The TIMS LabVIEW drivers are located in the \lib folder on the installation CD.

- Copy the entire \lib and \doc folder to wherever you would like the LabVIEW drivers to reside on your hard disk.
- Remove the CD from your drive.
- Inside the folder, you will also find the file "tims.mnu". This file may be used to insert TIMSFunction Palettes into your LabVIEW Palettes.
From the LabVIEW menus select Tools>Advanced>Edit Palette Views to link to an existing .mnu file, and browse to the TIMS.mnu file (Refer to LabVIEW documentation for information about menu files.)

Please refer to your TIMS device specific User Manual for further instructions and specifications.

Appendix

**Contact
Information**

To find out more about the TIMS family of USB based instruments, please contact us at:
1-800-755-1400

For information on our products and services, please visit our website at: www.wireworkswest.com.

For technical support issues, please contact us at 1-415-348-1408

Warranty

WireWorks West, Inc. warrants its products for a period of one year from date of delivery against defects in material or workmanship. Returned product will either be repaired or replaced at the option of WireWorks West, Inc. Specifications are subject to change without notice.

